

INFIGURAÇÃO
RA PLOTAGEM:
R COR PENA
7 0,10
7 0,20
7 0,30
7 0,40
7 0,50
7 0,60
7 0,70
8 0,80
7 0,20
7 0,10
7 0,30
0 250 0,15
1 251 0,15
2 252 0,15
3 253 0,15
4 254 0,15

BARRAS DOBRADAS EM 90°

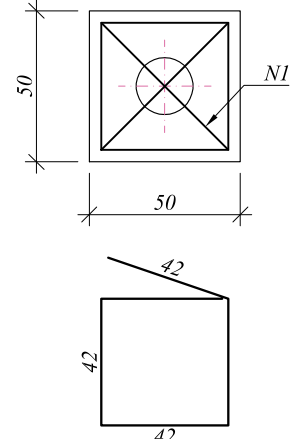
Obs: todas as medidas indicadas no desenho são externas.

REPRESENTAÇÃO

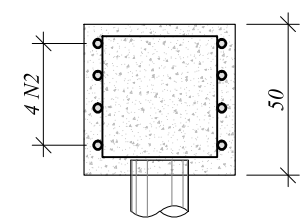
Ø	Barra min	Barra máx	CC
(mm)	(mm)	(mm)	(mm)
5	1,3	1,8	3
6,3	1,6	2,2	3,5
8	2,0	2,8	4,5
10	2,5	3,5	5,5
12,5	3,1	4,4	7
16	4,0	5,6	9
20	5,0	7,0	16
25	10,0	12,5	20
32	12,8	16,0	25
40	16,0	20,0	31

CONDICÃO REAL

BLOCO 1A (17x)
ESC: 1:25
BL.31 a BL.47

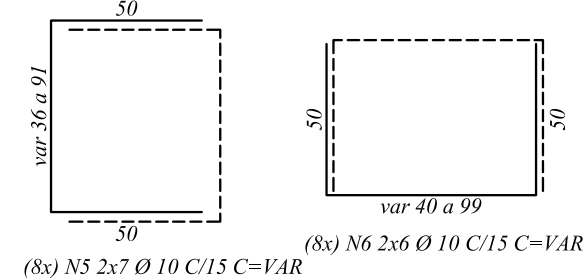
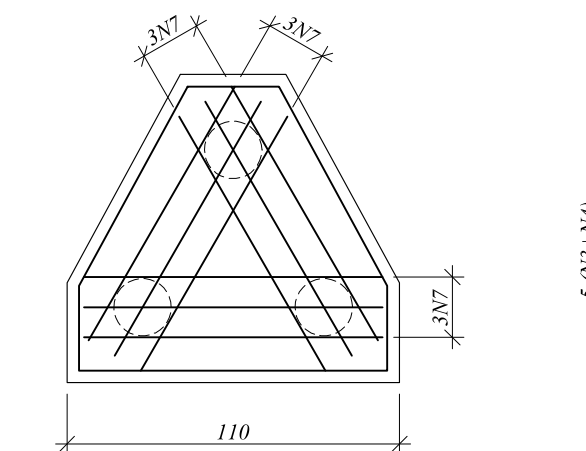
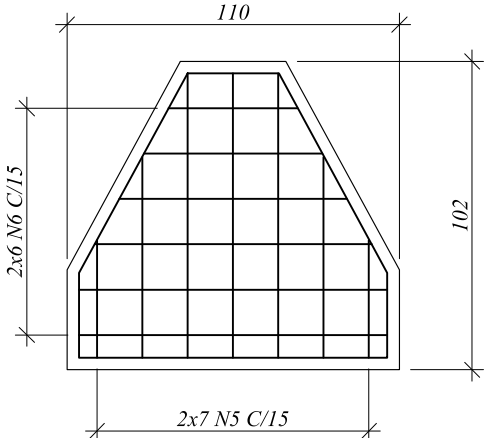


(17x) N.2 4 Ø 10 C=210

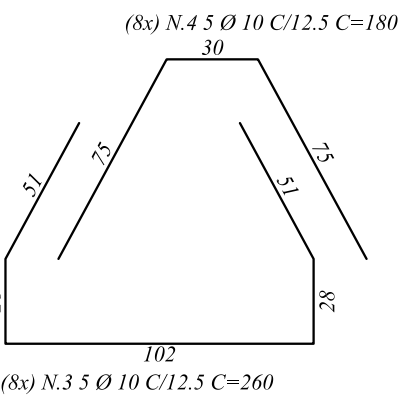


(17x) N.1 2 Ø 6,3 C=170

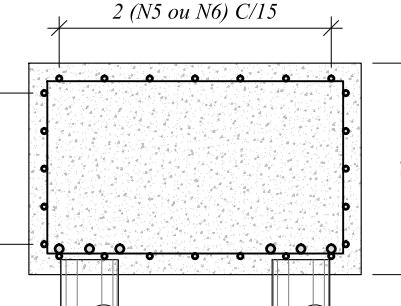
BLOCO 3A (8x)
ESC: 1:20
P.10 a P.14 / P.16 / P.19 / P.21



(8x) N5 2x7 Ø 10 C/15 C=VAR



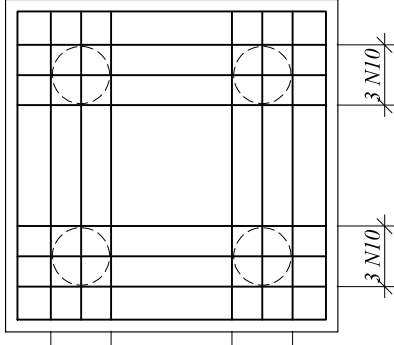
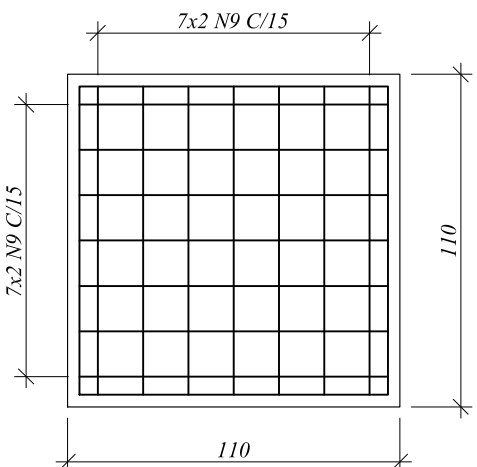
(8x) N.3 5 Ø 10 C/12,5 C=260



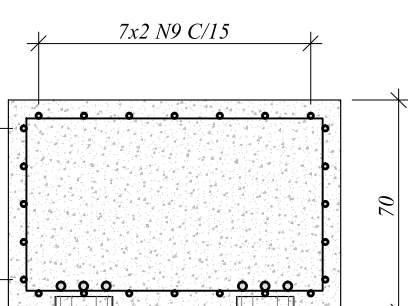
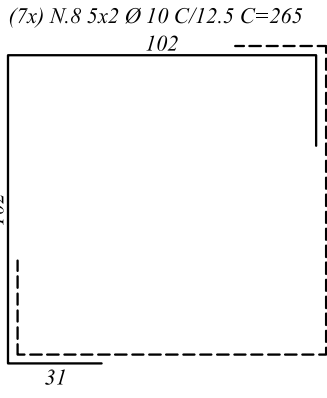
(8x) N.7 3x3 Ø 12,5 C/10 C=180

(8x) N6 2x6 Ø 10 C/15 C=VAR

BLOCO 4A (7x)
ESC: 1:25
P.2 / P.5 / P.15 / P.17 / P.18 / P.20 / P.30

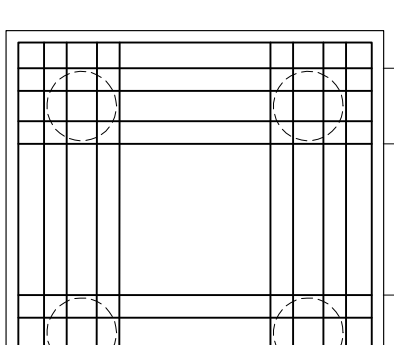
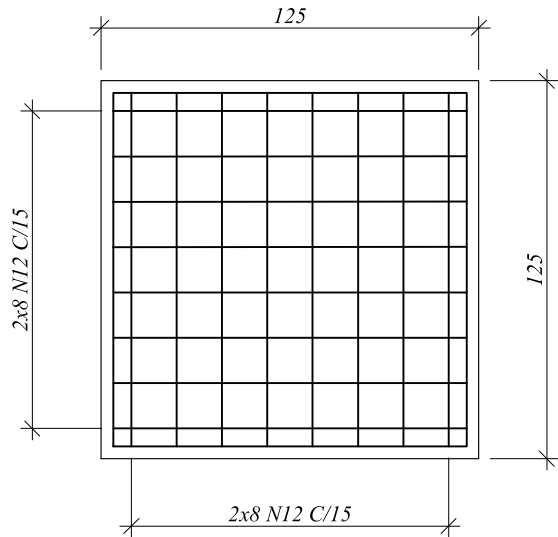


(7x) N.10 4x3 Ø 16 C/10 C=180

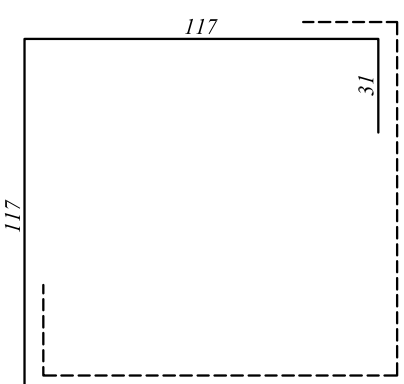


(7x) N.9 4x7 Ø 10 C/15 C=180

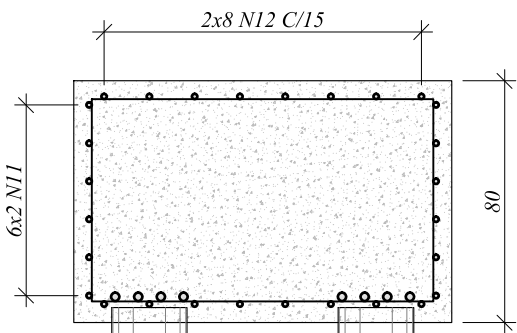
BLOCO 4B (14x)
ESC: 1:20
P.3 a P.8 / P.22 a P.29



(14x) N.13 4x4 Ø 16 C/7,5 C=195



(14x) N.11 6x2 Ø 10 C/12,5 C=295



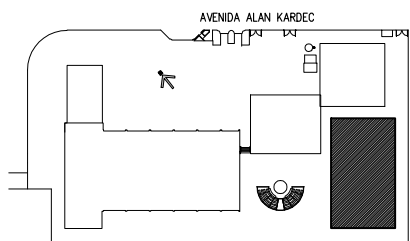
(14x) N.12 4x8 Ø 12,5 C/15 C=195

LISTA DOS FERROS

N	Ø (mm)	QUANT.	COMPRIMENTOS (cm)	
			UNITÁRIO	TOTAL
1	6,3	34	170	5780
2	10	68	210	14280
3	10	40	260	10400
4	10	40	180	7200
5	10	112	-- VAR --	18256
6	10	96	-- VAR --	16224
7	12,5	72	180	12960
8	10	70	265	18550
9	10	196	180	35280
10	16	84	180	15120
11	10	168	295	49560
12	12,5	448	195	87360
13	16	224	195	43680
14	10	8	200	1600
15	10	16	120	1920
16	12,5	4	195	780
17	16	5	195	975
18	10	128	115	14720
19	10	128	160	20480
20	10	56	205	11480

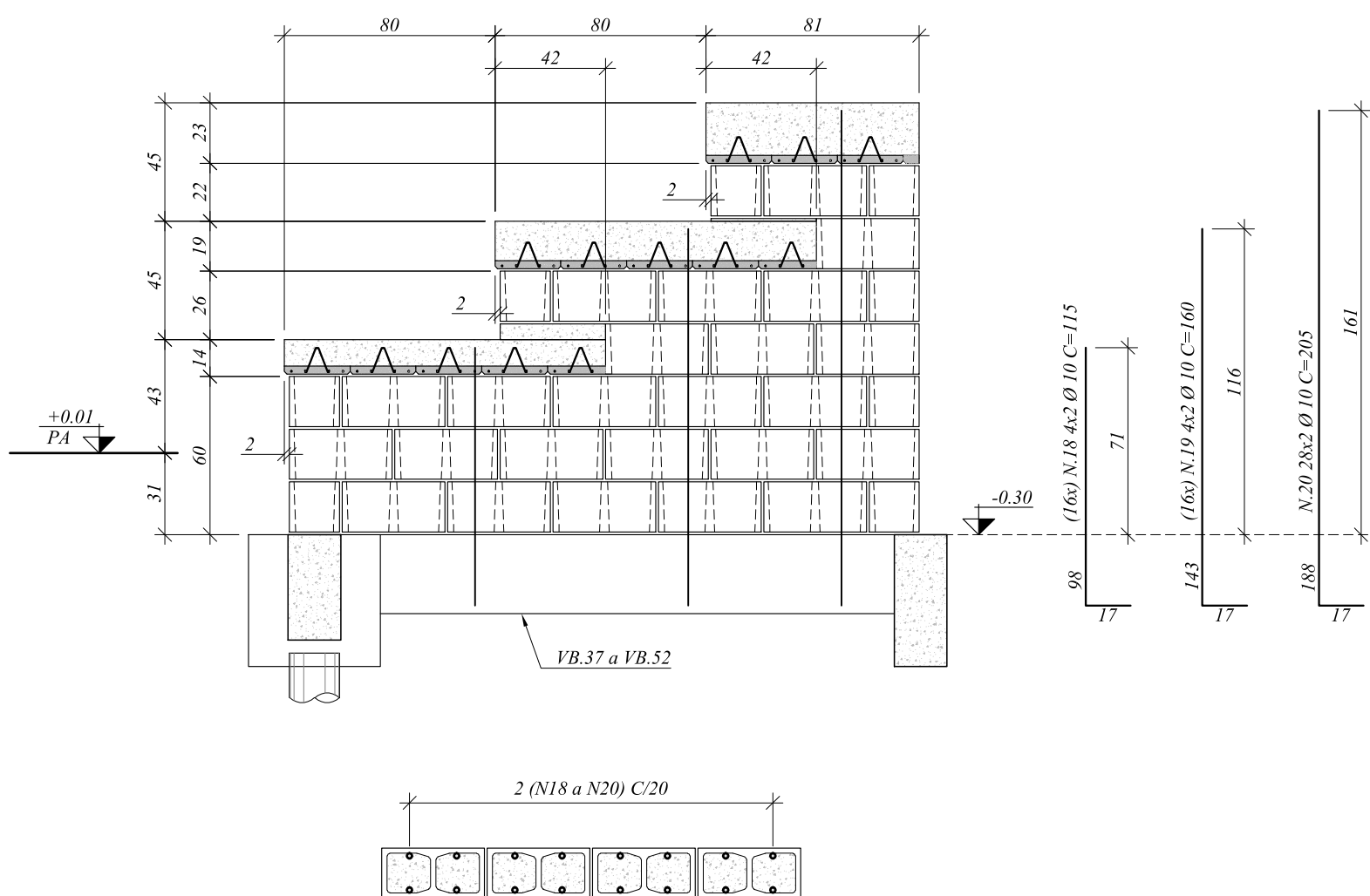
CA50A

Ø	kg/m	COMPR. (m)	TOTAL (kg)
6,3	0,25	57,8	15
10	0,63	2199,5	1386
12,5	1,00	1011	1011
16	1,60	597,8	956
PESO TOTAL			3368



VER NOTAS GERAIS NA FOLHA: CON-PE-6202
PEÇAS DETALHADAS: BL.1A / BL.3A / BL.4A / BL.2B / BL.4B /
APOIO DAS ARQUIBANCADAS

PAREDE DE APOIO DAS ARQUIBANCADAS (16x)
ESC: 1:25



UIE
Unidade de Infraestrutura

CPS
Centro Paula Souza



**GOVERNO DO ESTADO
DE SÃO PAULO**

CAMPUS CEETEPS EM XXX

UNIDADE
ETEC XXX

ENDEREÇO DA UNIDADE

ESTRUTURA

1/25

CON-005/012

PROJETO BÁSICO - MODELO PADRÃO - QUADRA POLIESPORTIVA COBERTA

FUNDAÇÃO

DETALHAMENTO DE ARMADURA DOS BLOCOS
CONSTRUÇÃO

DESENHO

PROJETO

COORDENAÇÃO

UIE

UIE

UIE

OBSERVAÇÃO

DATA

REVISÃO

CONFERIR MEDIDAS NO LOCAL

15/09/2017

R0